



STATE ROAD & TOLLWAY AUTHORITY

STATE OF GEORGIA

Nathan Deal, Governor
Chairman

Gena L. Evans, Ph.D.
Executive Director

FOR IMMEDIATE RELEASE
August 21, 2012

Contact: Office of Marketing & Communications
mwilkins@georgiatolls.com, 404-893-6103

SRTA Provides I-85 Express Lanes Monthly Commute Data August 21, 2012

SPECIAL NOTE: I-85 Express Lanes commute data is released monthly. See charts below representing monthly usage.

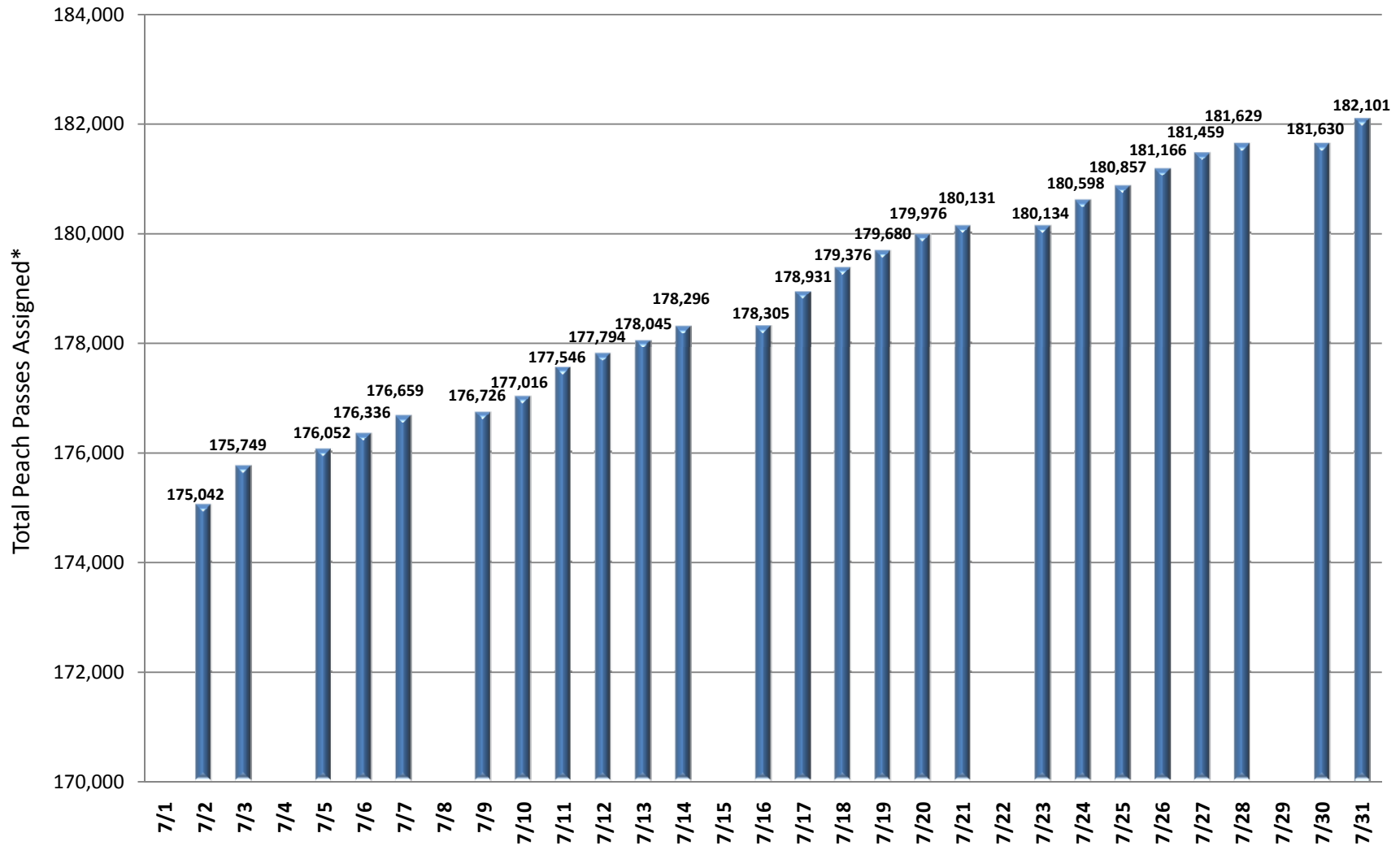
I-85 Express Lanes: Trips and Fare				
Monthly Summary	Monthly Trips	% of Trips Non-Tolled	Weekday Trips Average*	Daily Fare Average*
October 2011	159,799	23%	7,273	\$1.19
November 2011	221,552	21%	10,353	\$1.09
December 2011	209,561	21%	9,385	\$1.16
January 2012	254,075	20%	11,623	\$1.26
February 2012	349,270	16%	14,630	\$1.18
March 2012	413,516	15%	16,817	\$1.19
April 2012**	385,426	15%	16,334	\$1.08
May 2012	439,021	14%	17,585	\$1.14
June 2012***	387,676	14%	16,447	\$1.03
July 2012***	380,698	14%	15,968	\$1.09

*Averages do not include Weekends & State Holidays

** Data reflects a reduction in overall traffic during Spring Break holidays in April.

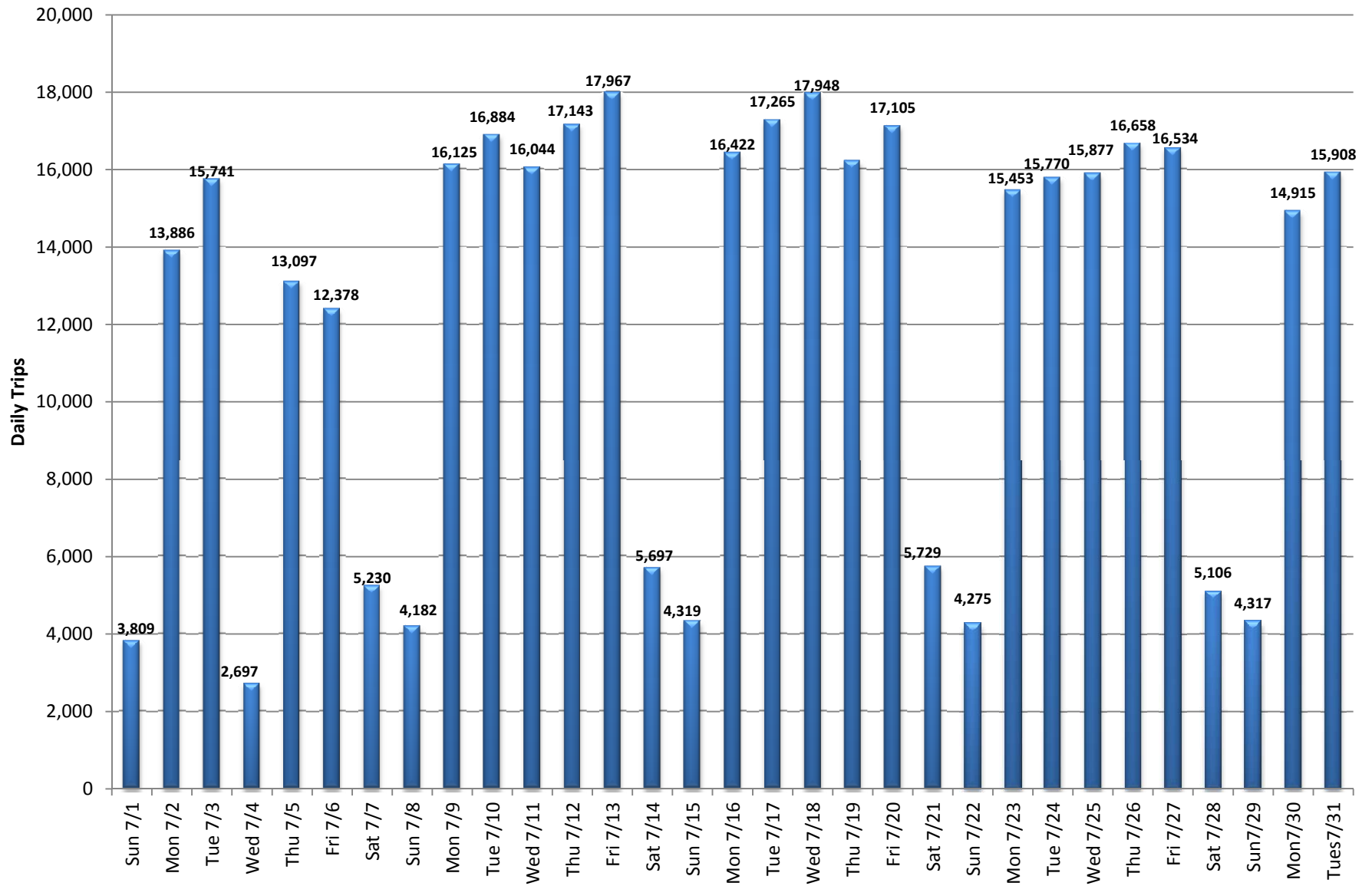
***Data reflects a reduction in overall traffic during school vacation period.

I-85 Express Lanes PeachPasses Assigned: July 2012*

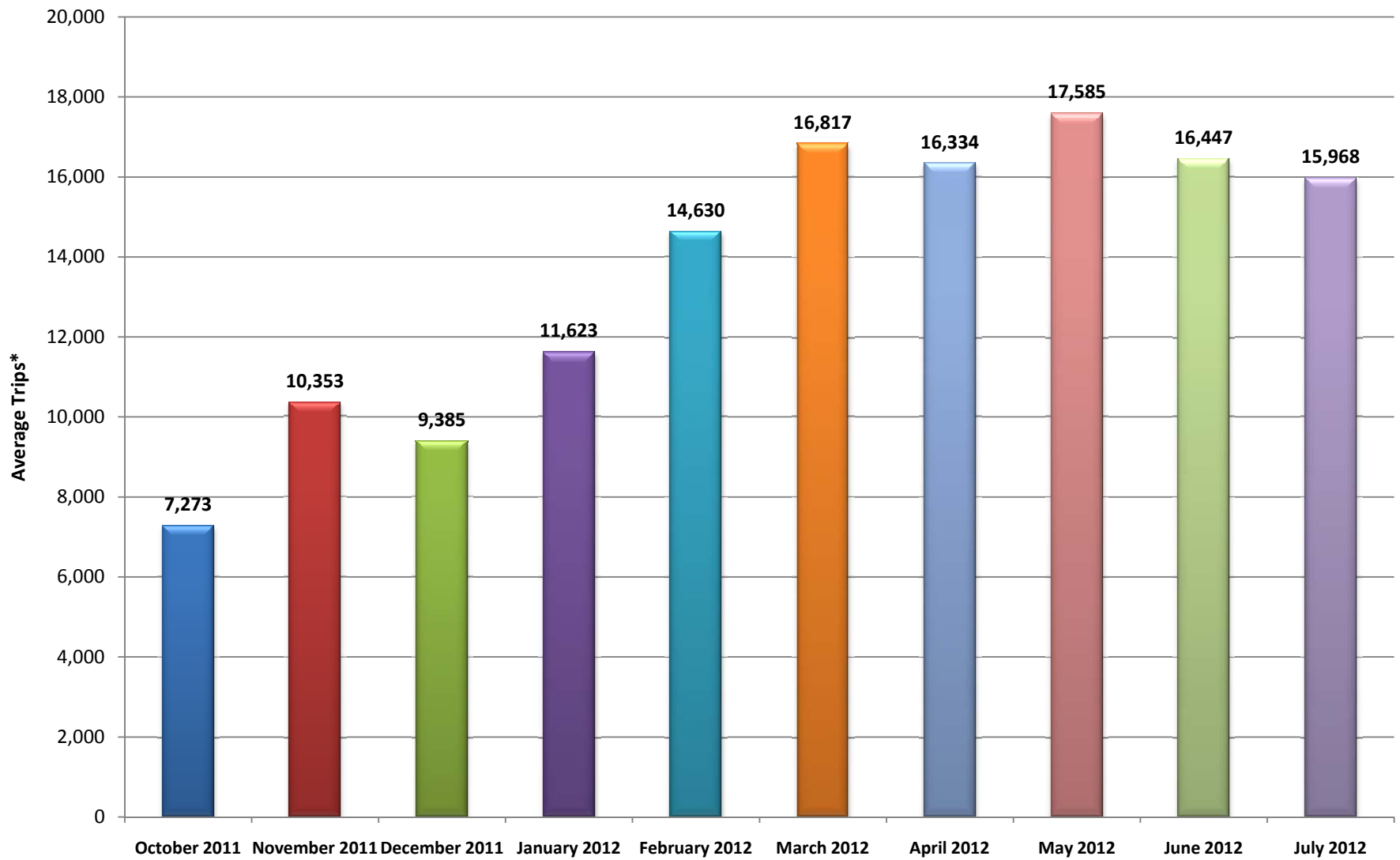


* PeachPass Totals are through End of Previous Business Day

I-85 Express Lanes Daily Trips: July 2012

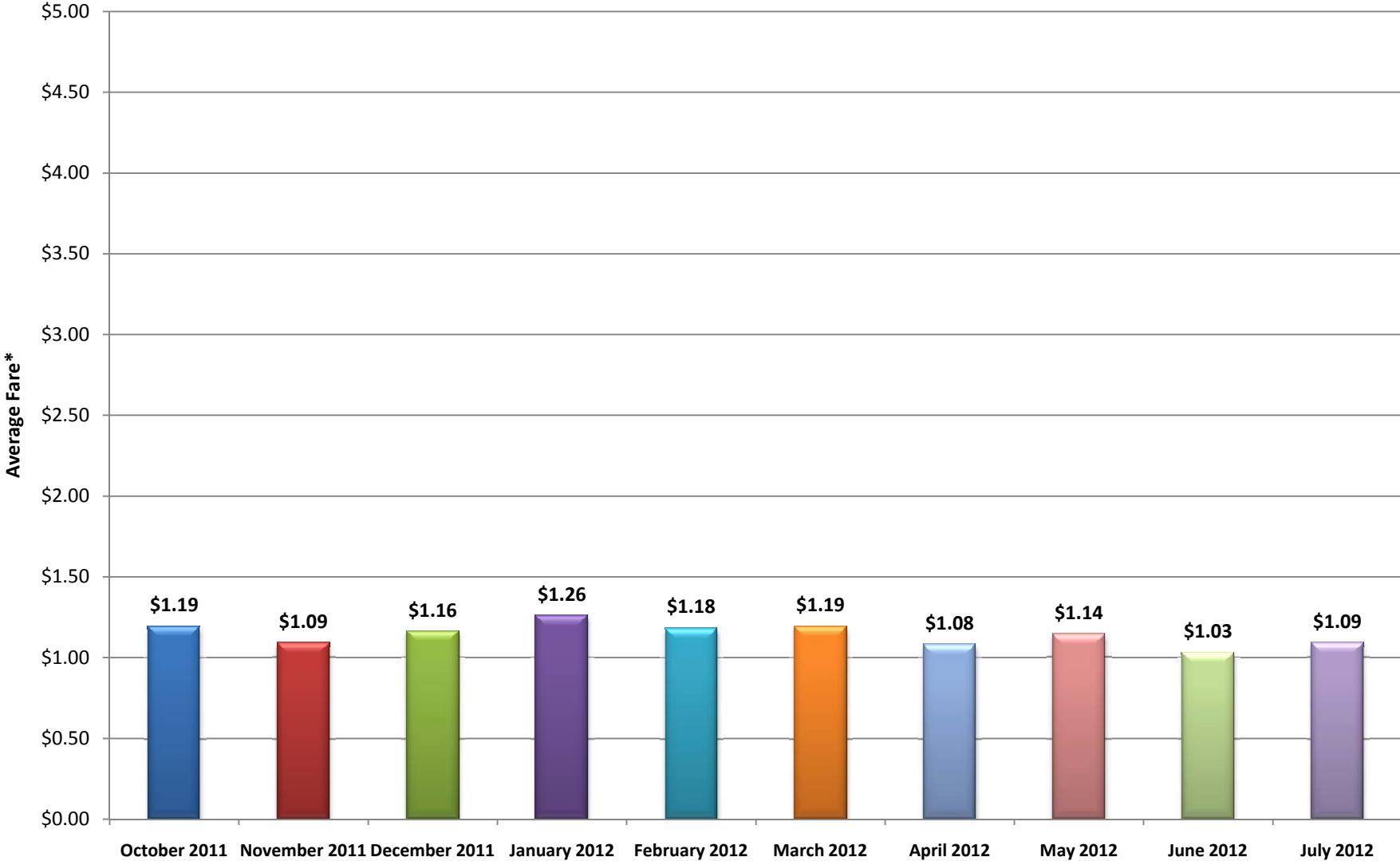


I-85 Express Lanes Daily Trip Averages by Month*



**Daily Averages do not include Weekends or State Holidays*

I-85 Express Lanes Daily Fare Averages by Month*



**Daily Averages do not include Weekends or State Holidays*